



**Disaster Management Information Centre  
Disaster Management Bureau (DMB)  
Ministry of Food and Disaster Management**

Disaster Management and Relief Bhaban (6<sup>th</sup> Floor)  
92-93 Mohakhali C/A, Dhaka-1212, Bangladesh  
Phone: +88-02-9890937, Fax: +88-02-9890854  
Email: [info@dmic.cdmp.org.bd](mailto:info@dmic.cdmp.org.bd), [dmb@bttb.net.bd](mailto:dmb@bttb.net.bd)  
Web: <http://www.cdmp.org.bd>, [www.dmb.gov.bd](http://www.dmb.gov.bd)

**Emergency Title:**

**Cyclonic Storm "SIDR"**

**Emergency Location:**

**Bangladesh**  
20°22'N-26°36'N, 87°48'E-92°41'E,

**Covering Period:**

From: THU-16-NOV-2007:0600  
To: FRI-16-NOV-2007:2200

**Transmission Date/Time:**

FRI-16-NOV-2007:2300

**Prepared by:**

DMIC, DMB

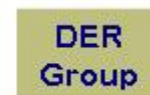
**Summary of Cyclone Situation**

Tropical Cyclone SIDR of Category 4 affected large number of population within its track with Hurricane wind strength. All possible steps have been taken by the GoB to face the situation. Several central control rooms were activated by different agencies at national, district and upazila levels. So far 2168 shelters were opened and near about 1.5 million people were taken into safe places. The shelters are equipped with medical teams, medicines and dry foods. Before the cyclone hit the border immense miking was done in the coastal belt to aware people and advising to take shelters. It was also ordered to maintain highest level of security at all KPIs (Key Point Installations) in the coastal belt. Joint Force, CPP volunteers, NGO and all local volunteers worked together to face the disaster.

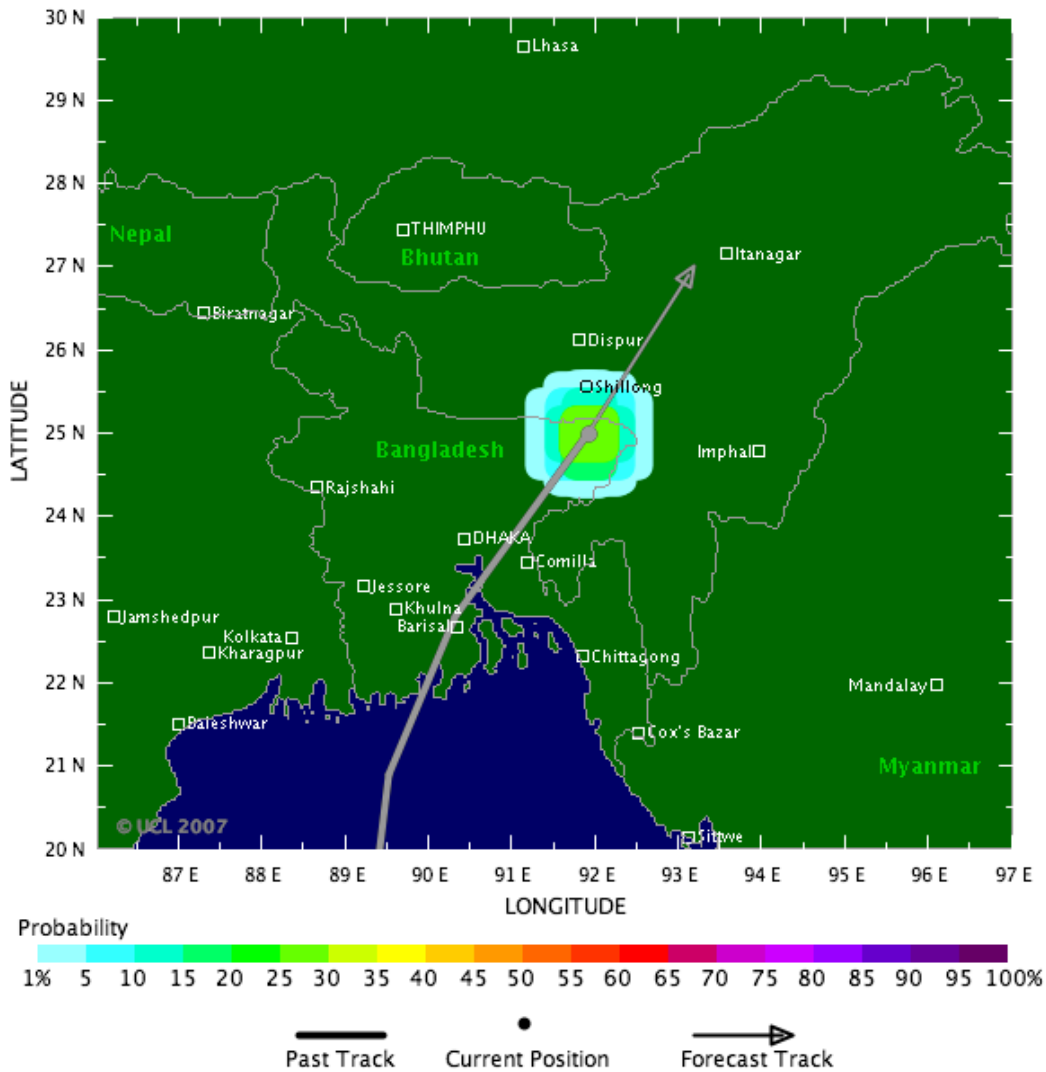
The country is facing severe electricity problem and expected to be restored gradually by night. Telecommunication systems at some cyclone affected areas are disrupted due to power failure and infrastructure damage.

95,000,000 taka GR Cash and House building grant have been allocated from the Honourable Chief Advisor's Relief and Welfare Fund to the 11 affected districts. MoFDM allocated 3000 MT GR Rice to 14 affected districts. 3000 pcs food items and family kits have been sent to Hironpoint, Dublarchar, Kuakata and Pathorghata by 12 helicopters of Bangladesh Air Force. 5 gunboats of Bangladesh Navy are operating for rescue and relief operation in cooperation with local administration. Deputy Commissioners are procuring and collecting sufficient amount of dry food to face the current situation. 732 medical teams are working in the affected areas.

The Disaster Management Information Centre is the information hub of the Ministry of Food and Disaster Management for risk reduction, hazard early warnings and emergency response and recovery activities



Tropical Storm SIDR: Current probability of Cat 1 or above winds



Probability Scale			
Chance of Happening	Value	Chance of Happening	Value
Extremely Low	10%	Medium-High	60%
Very Low	20%	High	70%
Low	30%	Very High	80%
Medium-Low	40%	Extremely High	90%
Medium	50%	Certain	100%

Note that all probabilities refer to the occurrence of 1-min sustained wind speeds  
 [Source: Tropical Storm Risk – TSR]

### District wise Damage Report

District	Damages	Number of Death	Missing	Remarks
Satkhira	75000 people of 15000 families of 12 unions of Shamnagar upazila are affected. 457 sq. km. area, 3500 household (totally) and 6500 household (partially), 150km embankment totally and embankment 150 km totally, 12 km partially of same upazila damaged.	3	1	Information collected from DC Control Room
Bagerhat	Many trees of Morelganj, Mangla, Sarankhola, Sadar Pouroshova, Fakirhat and other upazilas are uprooted and unstructured and semi structured houses damaged by the hurricane. Communications systems, supply of electricity and mobile telephone systems are disconnected. Morelganj inundated by 2-3 feet tidal surge. Detailed information could not be collected from Sarankhola, Mongla, Dublar char due to communication disconnection.	131	0	As above
Khulna	Many trees uprooted and unstructured and semi structured houses damaged. Communications systems, supply of electricity and mobile telephone systems are disconnected.	12	0	As above
Jessore	Many trees uprooted and unstructured and semi structured houses damaged. 2 persons severely injured.	1	0	As above
Pirozpur	Many trees uprooted and unstructured and semi structured houses damaged. Communications systems, supply of electricity and mobile telephone systems are disconnected. The district has been flooded by tidal surge.	1	0	As above
Borguna	Communications systems, supply of electricity and mobile telephone systems are disconnected. Severe damage has been reported.	35	115	As above
Patuakhali	Communications systems, supply of electricity and mobile telephone systems are disconnected. Severe damage has been reported. Many places of the district inundated by 2-3 feet tidal surge.	264	60	As above
Barisal	Many trees uprooted and unstructured and semi structured houses damaged. Communications systems, supply of electricity and mobile telephone systems are disconnected.	67	0	As above
Bhola	Many trees uprooted and unstructured and semi structured houses damaged. Communications systems, supply of electricity and mobile telephone systems are disconnected. Monpura went under 3-4 feet tidal surge.	20	16	As above
Jhalokathhi	Many trees uprooted and unstructured and semi structured houses damaged. Communications systems, supply of electricity and mobile telephone systems are disconnected. The district has been flooded by tidal surge.	16	0	As above
Laxmipur	9988 families, 50695 people, affected. 6602 houses partially, 1479 totally, 117 educational institutions damaged. Many trees are uprooted.	1	0	As above
Feni	Many trees uprooted and unstructured and semi structured houses damaged. Communications systems, supply of electricity and mobile telephone systems are disconnected.	0	0	As above
Noakhali	Trees and houses were partially damaged in the district.	0	0	As above
Chandpur	Trees and houses were damaged in the district. Communication system, supply of electricity and mobile phone lines are partially damaged. The district has been flooded by tidal surge.	4	0	As above
Chittagong	Trees and houses were damaged in the district. Communication system, supply of electricity and mobile phone lines are partially damaged. Swandip upazila has been damaged severely.	0	0	As above
Cox's Bazar	36 unions affected. Trees and unstructured and semi structured houses damaged in Moheshkhali, Kutubdia, Chokoria and Pekua.	0	0	As above
Madaripur	Communication systems, supply of electricity and mobile phone systems are disconnected.	30	0	As above

The Disaster Management Information Centre is the information hub of the Ministry of Food and Disaster Management for risk reduction, hazard early warnings and emergency response and recovery activities

## Situation Report

District	Damages	Number of Death	Missing	Remarks
Faridpur	Communication systems, supply of electricity and mobile phone systems are disconnected.	1	0	As above
Narail	Communication systems, supply of electricity and mobile phone systems are disconnected.	0	0	As above
Gopalganj	Communication systems, supply of electricity and mobile phone systems are disconnected.	26	0	As above
<b>Total</b>		<b>612</b>	<b>192</b>	

### GOVERNMENT ALLOCATION FOR IMMEDIATE RELIEF ASSISTANCE

The government has initiated relief operations with the following allocations being made as an initial distribution.

Allocation of GR Cash		
Date	District	Allocated GR Cash (Tk.)
November 16, 2007	Laxmipur	3,75,000
	Chandpur	4,25,000
	<b>Total</b>	<b>8,00,000</b>
November 15, 2007	Satkhira	3,00,000
	Khulna	2,00,000
	Bagerhat	2,00,000
	Borguna	4,25,000
	Pirozpur	4,10,000
	Jhalokathhi	4,50,000
	<b>Total</b>	<b>8,00,000</b>

Allocation of GR Rice			
Date	District Name	Allocated GR Rice (MT)	
November 16, 2007	Satkhira	150	
	Khulna	150	
	Bagerhat	200	
	Madaripur	200	
	Shariatpur	100	
	Gopalganj	100	
	Pirozpur	100	
	Jhalokathhi	150	
	Barisal	200	
	Borguna	200	
	Patuakhali	250	
	Bhola	100	
	Laxmipur	100	
	Chandpur	100	
	<b>Total</b>	<b>2,100</b>	
	November 15, 2007	Narayanganj	50
		Thakurgaon	50
Panchagarh		50	
Jessore		50	
Rajshahi		50	
Chittagong		50	
Cox's Bazar		50	
Noakhali		50	
Feni		50	
Borguna		50	
<b>Total</b>	<b>500</b>		

The Disaster Management Information Centre is the information hub of the Ministry of Food and Disaster Management for risk reduction, hazard early warnings and emergency response and recovery activities

**Allocation of relief by the Royal Saudi Government**

DRR allocated the following amount of food/other relief items bought locally and provided by the Royal Saudi Government to distribute among cyclone affected people of DUBLACHAR and HIRON POINT of BAGERHAT, PATHORGHATA of BORGUNA and KUAKATA of PATUAKHALI on November 16, 2007:

District	Quantity of Tent		
	Food (Bags)	Other Item (Bags)	Total
Bagerhat	750	750	1500
Borguna	375	375	750
Patuakhali	375	375	750
<b>Total</b>	<b>1500</b>	<b>1500</b>	<b>3000</b>

**Allocation of Tents by the Royal Saudi Government**

DRR allocated the following amount of tents provided by the Royal Saudi Government as relief to distribute among cyclone affected people on November 14, 2007:

District Name	Quantity of Tent		
	Plastic tent	Cotton tent	Total tent
Chittagong	500	200	700
Cox's Bazar	400	200	600
Feni	300	150	450
Noakhali	300	150	450
Laxmipur	200	100	300
Chandpur	200	150	350
Patuakhali	300	150	450
Barisal	500	210	710
Bhola	500	200	700
Borguna	300	150	450
Khulna	200	150	350
Satkhira	500	200	700
Bagerhat	300	150	450
Pirozpur	100	100	200
Jhalokathi	100	100	200
<b>Total</b>	<b>4700</b>	<b>2360</b>	<b>7060</b>

[Source: Directorate of Relief and Rehabilitation]

**Response from WFP, Bangladesh**

Immediate HEB Distribution Plan among Cyclone SIDR Affected People

Name of District	Name of Upazila	Total Population (Nos.)	Total Family (Nos.)	Ration per family per day (gram)	Duration of the ration (days)	Total HEB Required (MT)	Implementing partner	Remarks
Satkhira	Shyamnagar	75,000	15,000	375	2	11.25	SHUSHILAN	Planned distribution on 16 Nov 07
<b>Sub Total</b>		<b>75,000</b>	<b>15,000</b>			<b>11.25</b>		
Bagerhat	Mongla	50,000	10,000	375	2	7.50	SHUSHILAN	Planned distribution on 16 Nov 07
<b>Sub Total</b>		<b>50,000</b>	<b>10,000</b>			<b>7.50</b>		
<b>Total</b>		<b>125,000</b>	<b>25,000</b>			<b>18.75</b>		

**Note:**

- Each family will receive 10 small packets (75gm each) of High Energy Biscuits as 2 days supplementary ration
- 7 WFP Teams are assessing the overall situation in the cyclone hit areas
- As immediate response, WFP made available 98 MT of HEB of which 18.75 already dispatched and rest are under planning in severely affected areas

The next situation report will be issued tomorrow morning or as more information becomes available.